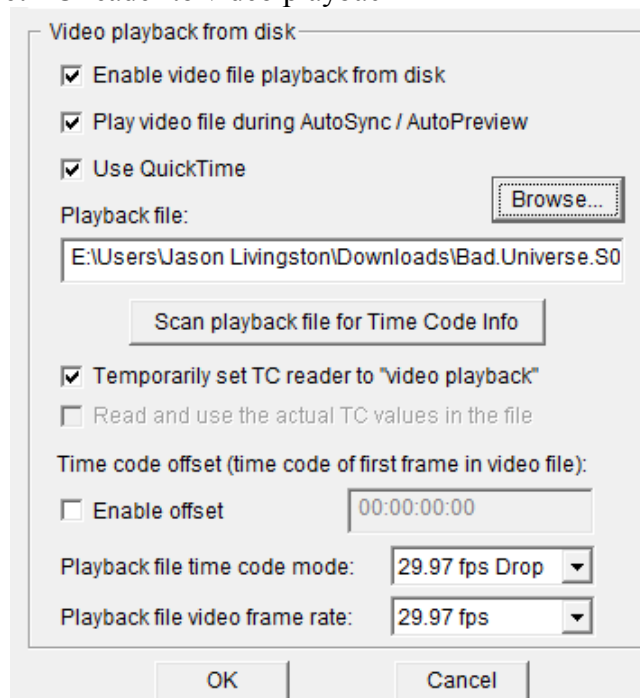


CPC CaptionMaker - Avid AAF Export for HD Closed Captioning

Preparing Captions

Note: If you already have a timed transcript or caption file (such as .CAP, .SCC, etc.) you can skip ahead to the next section.

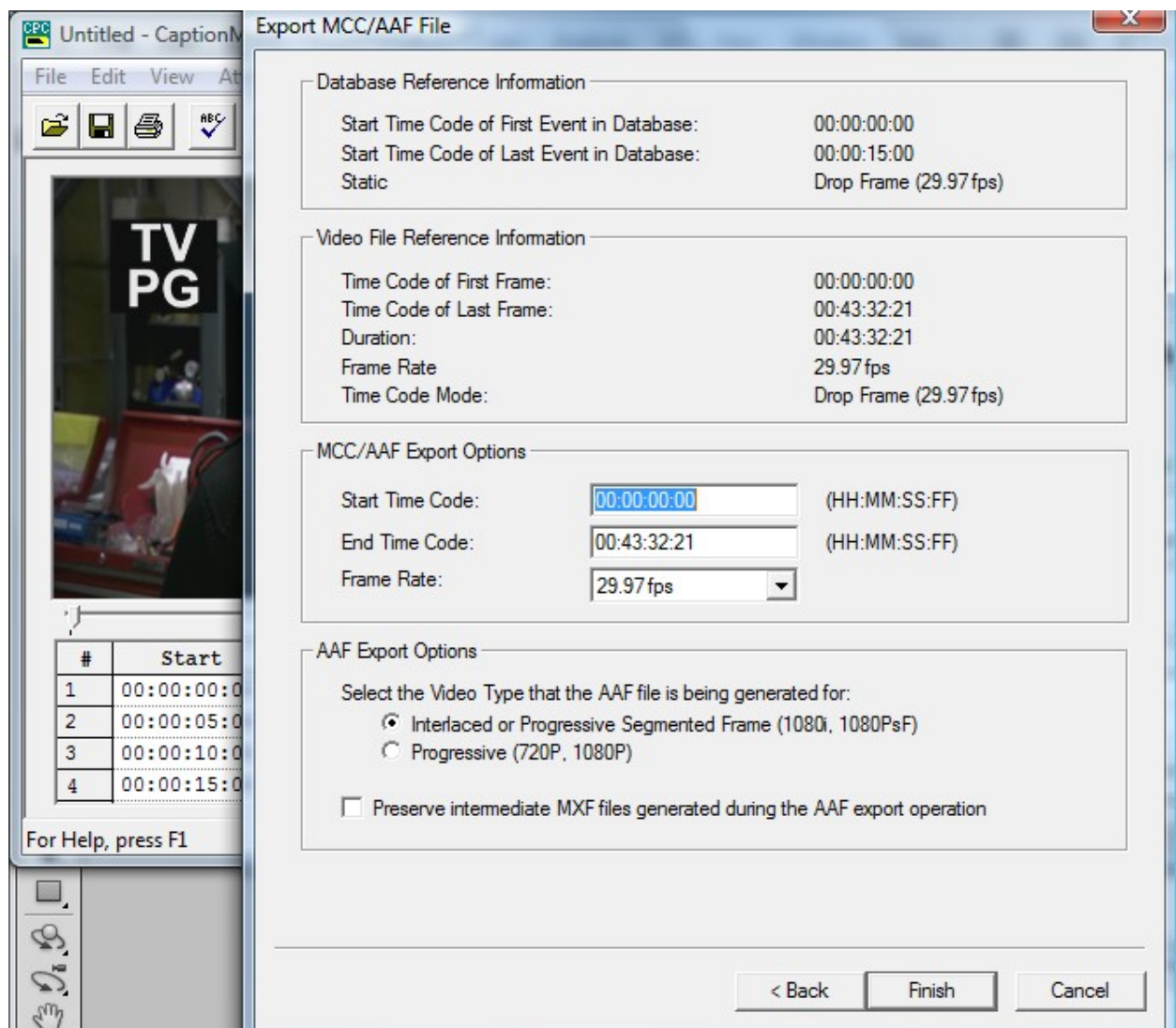
1. To use as a reference for your captioning, export a movie from your Avid sequence. This can be a QuickTime Reference if you are using CaptionMaker on the Avid system. If your captioner is remote, you can export a small low-res movie (proxy), for example QuickTime H.264 320x240 500kbps. You only need a low quality reference to be able to judge the caption timing and placement.
2. Import this movie into CaptionMaker by dragging and dropping it into the video window on the upper left side. A “Video Properties” dialog box will appear. Make sure the following options are checked:
 - “Enable video file playback from disk”
 - “Play video file during Auto-sync/Auto-preview”
 - “Use QuickTime” (only if the file is a QuickTime, i.e. .mov/.mp4)
 - “Temporarily set TC reader to video playback”



3. Proceed to transcribe, format and time stamp your closed captions. Please see the manual or video tutorials on our website for more information on these steps.

Exporting to AAF

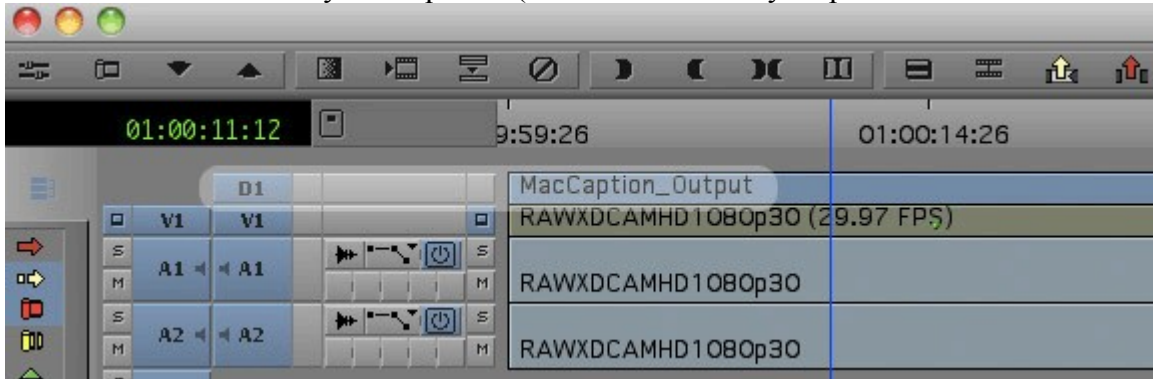
1. Once captions are ready for export, go to File > Export. Select the “HD” group, and then select “Avid Captions Only AAF”
2. Under “Output File Name”, enter or browse to a location and enter the name to save the new file, then click Next.



3. In the options screen, confirm that:
 - If your captions start at 00:00:00:00, then you probably want the MCC/AAF Export Options “Start Time Code” box to contain 00:00:00:00 as well. In the example above, my captions are zero-based (the first caption time is 00:00:00:00) so I will use zero as my AAF starting time.
 - If your captions start with a sequence time code like 01:00:00:00, then you want the “Start Time Code” box to have the same start time as your Avid sequence. This might be 01:00:00:00, or if you have bars/tone/slate on your sequence, it might be 00:58:30:00 or similar.
 - The Frame Rate selector should match your Avid sequence (typically 29.97fps for 1080i video, or 59.94fps for 720p).
 - Under AAF Export options, select “Interlaced or Progressive Segmented Frame” if you are working with an “i” format (e.g. 1080i) or a Psf format (e.g. 1080Psf 23.98). Or select “Progressive” if you're working with a true “p” format (e.g. 720p).
 - Hit “Finish” to complete the AAF export

Import AAF file into Media Composer

1. Open up your MC5 project bin, go to File > Import and import the AAF file created in the previous step.
2. Place this bin item onto your sequence (it will automatically be placed on the “D1” data track).



3. If you are using Mojo DX/Nitris DX hardware to play out by HD-SDI, and you have a HD-SDI monitor that displays closed captions, you should be able to play the sequence and the captions will appear on the monitor. Make sure your hardware output format matches your sequence format (i.e. if your sequence is 1080i, do not output 720p or vice versa, as the captions only work when the formats match.)
4. If you will be recording to a Sony deck (HDCAM, XDCAM, etc.) by HD-SDI, make sure the deck is enabled to record VANC Line 9. See our website for more information: http://cpcweb.com/hdtv/xdcam.htm#Sony_HD_Deck_Settings
5. If your final export is for Sony XDCAM disc (not via HD-SDI), go to Output > Export to Device > XDCAM and export the file as you normally would to XDCAM. This file will contain the D-track CC information.

More information

For the latest software updates, tutorials, and helpful hints, please check our website <http://www.cpcweb.com> as it is updated frequently.

© 2010 CPC Computer Prompting & Captioning Co.
Written by Jason Livingston jason@cpcweb.com